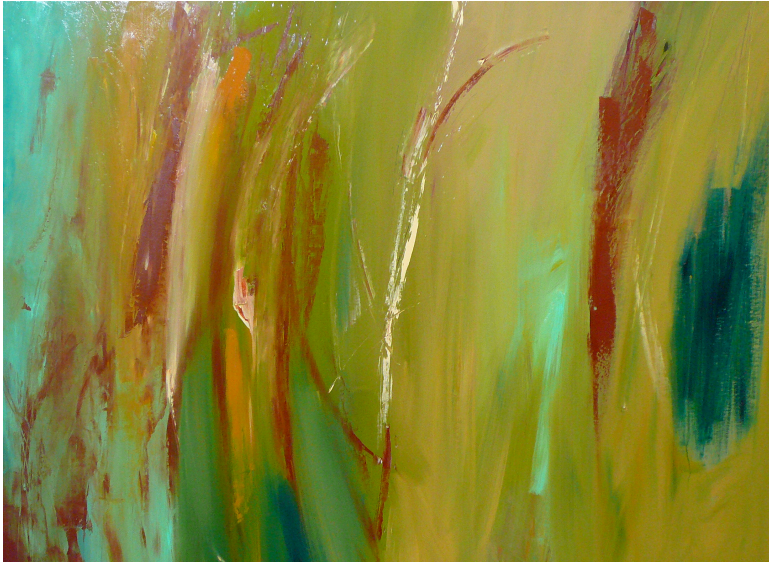


Celebrating Arts in Healthcare Month

## Heartland Exhibition

April 25 - May 1, 2010

New Paintings | Donna Bruni Sculpture | Roger Junk, Cathy Bratter



### Heartland Exhibition

New Paintings | Donna Bruni  
Sculpture | Roger Junk, Cathy Bratter

In conjunction with Society for the Arts in  
Healthcare (SAH) pARTners for Health  
21st Annual International Conference

Exhibition includes Heartland collaborative art created in  
image-making workshops led by Donna Bruni

**April 25 - May 1, 2010**

**PREVIEW Reception** with the artists

Sunday April 25, 3 pm to 6 pm

**SAH Conference Reception**

Wednesday, April 28, 4 pm to 7 pm

following Mill City Clinic clinic tour

Gallery is located at Mill City Clinic in the Zenith Condominium  
Building across from the Guthrie Theater at 901 Second Street  
South, Minneapolis, MN. Gallery entrance on 9th St.

**Exhibition Hours:**

Thursday, April 29th, noon to 7 pm

Friday, April 30th, noon to 5 pm

Saturday, May 1st, 10 am to noon

Visit [www.donnabruniart.com](http://www.donnabruniart.com) for more information